



# SYSTEM OVERVIEW



Through Research Innovative

# PHILOSOPHY

TRI® Dental Implants is an innovative provider of dental implant solutions from Switzerland. Join our unique approach in implant dentistry!

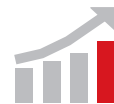


Founder & CEO  
Tobias S. Richter



## SWISS QUALITY

High-Quality Products  
from more than  
25 years of World Class  
Production



## PERFORMANCE

4 Gold Standards  
for maximum  
performance  
in your daily clinic



## SIMPLICITY

50% less components due to an intelligent portfolio structure



## FAIR PRICE

Up to 50% less in price due to a lean and smart business model

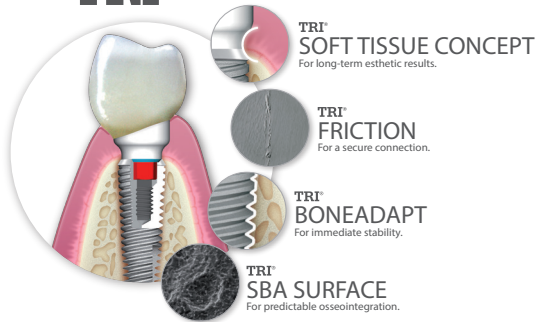


## THINK DIFFERENT

The essence from 20 years of dental implantology combined with a novel and innovative company concept

# SUCCESS FACTORS OF THE TRI<sup>®</sup> DENTAL IMPLANT SYSTEM.

## TRI<sup>®</sup> PERFORMANCE CONCEPT

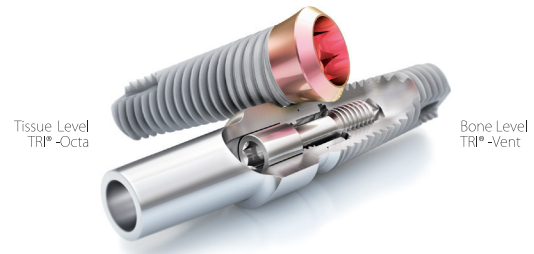


The TRI<sup>®</sup> Performance Concept integrates 4 Gold Standards, in order to make the life of the practitioner as **SIMPLE** and yet **HIGH PERFORMING** as possible to achieve natural esthetic results in daily practice.

(Pag. 5-11)

The TRI<sup>®</sup> Performance Concept is incorporated in the **Bone Level** (TRI<sup>®</sup>-Narrow, TRI<sup>®</sup>-Vent) and **Tissue Level** (TRI<sup>®</sup>-Octa) implant lines and ensures optimal esthetic results both in the anterior and posterior area.

(Pag. 14)



The revolutionary **touchless delivery** concept TRI<sup>®</sup> Pod allows to pick-up the implant directly with the surgical hand-piece **in one single step**. Whilst guaranteeing the highest purity of the TRI<sup>®</sup> SBA surface. A true design innovation which will take your surgical performance to a new level.

(Pag. 12)

TRI<sup>®</sup> sets new standards with TRI+, an **open interface** with leading technology partners in digital dentistry. TRI+ enables you to plan (guided surgery) and restore (CAD/CAM) TRI implants with your digital system of choice.

(Pag. 13)

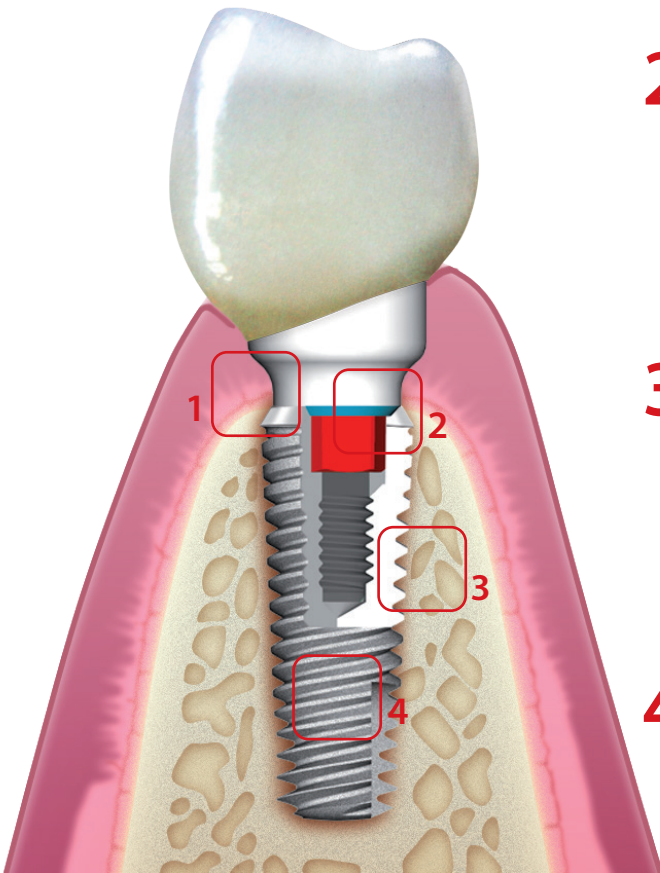


**TRI+**

# TRI® PERFORMANCE CONCEPT

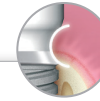
## 4 GOLD STANDARDS IN ONE CONCEPT.

The TRI® Dental Implant System integrates four essential technology features. Each feature aims to provide maximum performance and lasting quality for the treatment of the dentist. We combine these elements in the TRI® Performance Concept.



# 1

(Pag. 6-7)

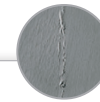


**TRI®  
SOFT TISSUE CONCEPT**  
For long-term esthetic results.

- Integrative platform-switch concept to preserve the crestal bone
- Consistent soft tissue management within all prosthetic components
- Homogeneous transition between implant and abutment to avoid «dirt pockets»

# 2

(Pag. 8)

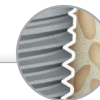


**TRI®  
FRICTION**  
For a secure connection.

- Secure abutment stability through a dense tapered press fit
- Elimination of micro-movements between implant and abutment
- Internal hex for guided abutment positioning

# 3

(Pag. 9)

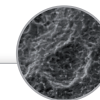


**TRI®  
BONEADAPT**  
For immediate stability.

- High primary stability through a tapered implant body with self-cutting thread
- Bio-mechanical bone-adaption with maximum bone-to-implant contact
- Optimized conservation of the cortical bone through macro-thread design

# 4

(Pag. 10-11)



**TRI®  
SBA SURFACE**  
For predictable osseointegration.

- Fast and reliable osseointegration
- Industry gold standard for secure osseointegration for more than 20 years
- World's most scientifically proven surface technology.

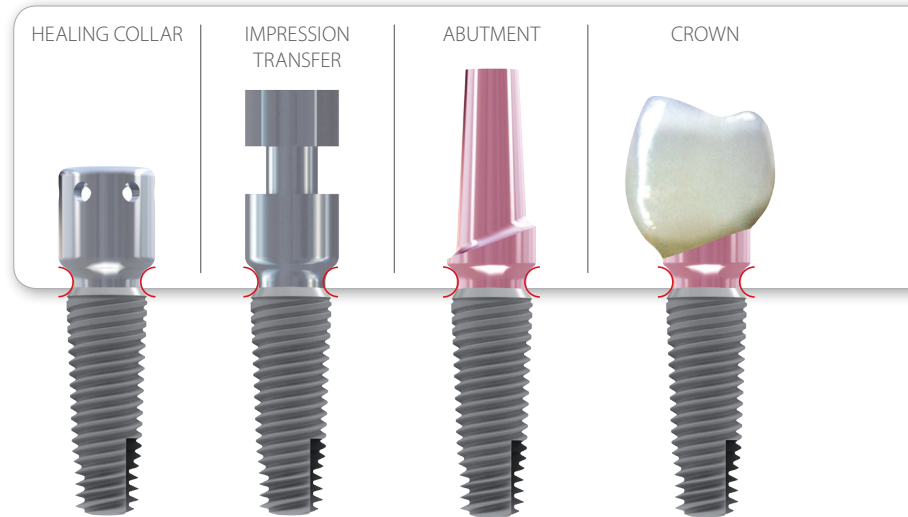
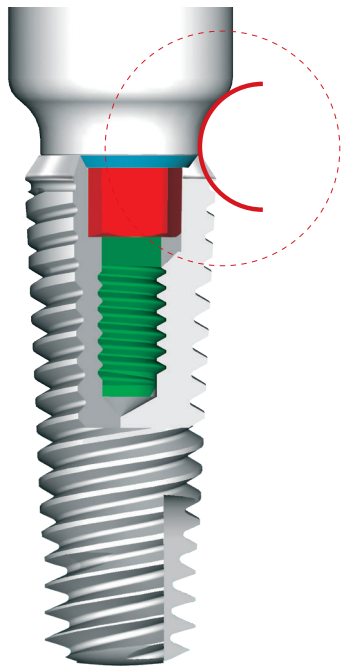
SBA: Sand-Blasted, large-grit, double Acid-etched

# TRI<sup>®</sup> SOFT TISSUE CONCEPT FOR LONG-TERM ESTHETIC RESULTS.



The soft-tissue interface of the TRI<sup>®</sup> Dental Implant System is unique and innovative at the same time. The continuous platform switch allows for a consistent and tight soft tissue seal around the implant abutment connection. All prosthetic components integrate a consistent emergence profile – covering all components, from impression post and healing cap to the final abutment.

## CONSISTENT EMERGENCE PROFILE

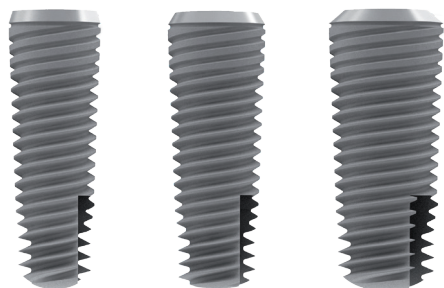


## SOFT TISSUE INTERFACE

The soft tissue interface is smooth and leaves no “dirt pockets” despite its broad platform switching concept. As a result, the soft tissue protects and seals the critical implant-abutment interface.



## ONE SIZE FITS ALL



### Maximum prosthetic flexibility with **ONLY** one connection

With only one prosthetic connection per implant line TRI® reduces the number of components to a minimum, optimizing the handling and storage requirements in the daily practice. Choose your optimal abutment with the **TRI® Soft Tissue Concept**, to achieve high-end esthetic results.

## PRODUCT RANGE

HEALING  
ABUTMENTS



CLOSED  
AND OPEN TRAY  
TRANSFERS



TEMPORARY  
ABUTMENTS



STRAIGHT  
ABUTMENTS



ANGLED  
ABUTMENTS



CASTABLE  
ABUTMENTS



SCREW-RETAINED  
ABUTMENTS



LOCATOR  
ABUTMENTS



BALL  
ABUTMENTS



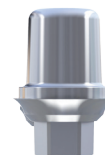
### MULTI-FUNCTIONAL ABUTMENT

This abutment can be used as transfer as well as final abutment. It can be purchased with the implant as a package.



### ALL-ON-TRI® ABUTMENT

The „All-on-TRI“ Abutment allows for efficient and predictable treatment of fully edentulous patients with limited available bone.



### CAD/CAM ABUTMENT

This abutment is the base for customizable prosthetics. It integrates the TRI® Friction and TRI® Soft Tissue Concept.

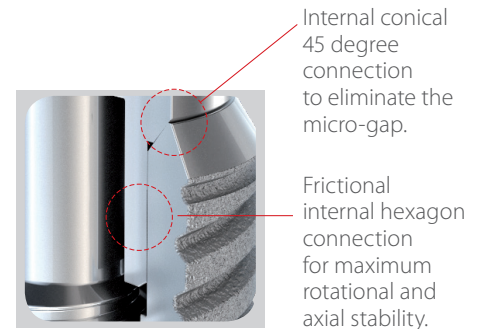
# TRI® FRICTION

## FOR A SECURE CONNECTION.

**TRI® FRICTION** is a technologically unique prosthetic connection and an integral element of the TRI® Performance Concept. A production tolerance of 0.006 mm guarantees the perfect and highly precise fit of the prosthetic components with long-term stability.

### Advantages of TRI® FRICTION:

- Press fit for maximal abutment stability
- Avoid micro movements between implant and abutment
- No screw loosening through rotational stability
- Improved handling through retention of the abutment even without screw



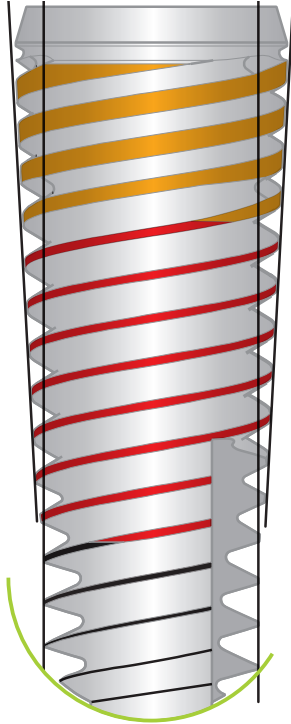
**Probably the strongest connection in the world.**





# TRI<sup>®</sup> BONEADAPT

## FOR IMMEDIATE STABILITY.



### Platform Switch Neck Design

to shift the biological width horizontally and stabilize the crestal bone



### Crestal thread design

with square thread pattern to protect the cortical bone



### Body thread design (60 degrees)

to enhance bone surface area in the spongiosa for optimal bone-to-implant contact



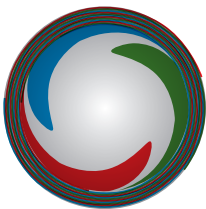
### Apical thread design (45 degrees)

with increased sharpness for immediate primary stability



### Round Apex

to protect the Schneiderian Membrane



### TRIPLE-LEAD THREADS

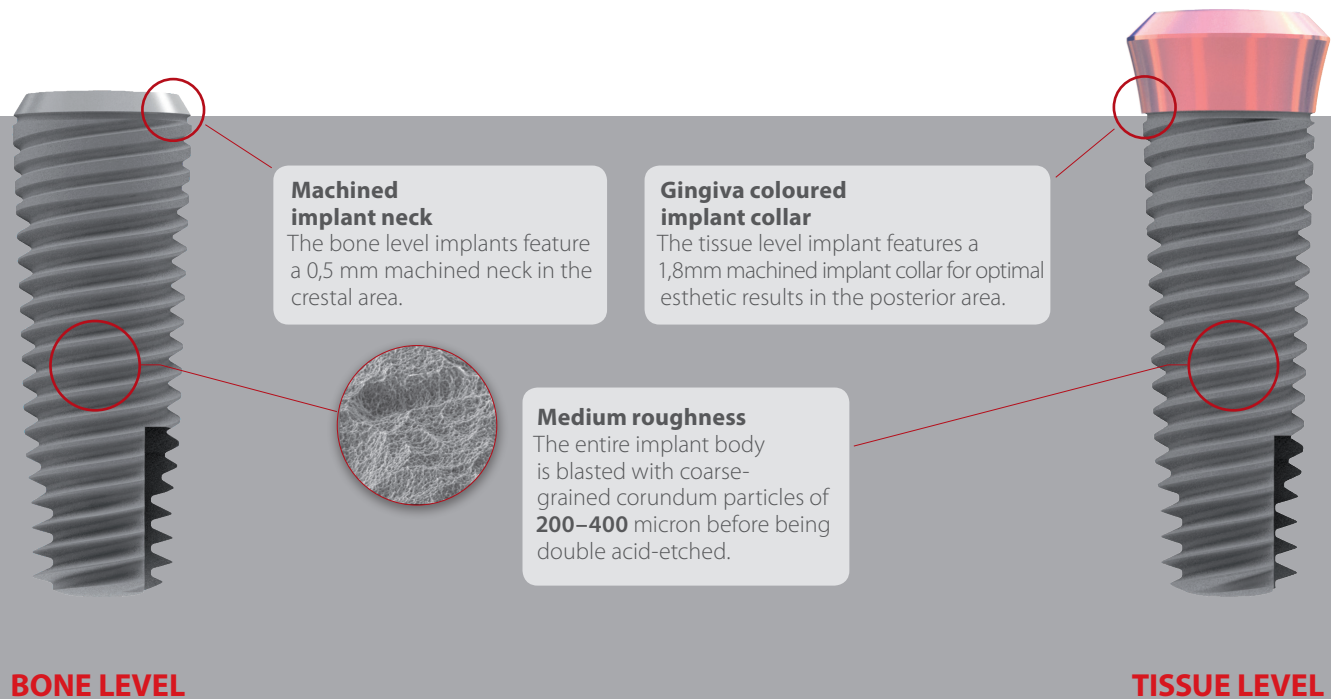
Three independent threads start 120° apart and spiral around the implant body and end on the crestal vertical groove. Triple threads provide a lead of 1.8 mm per rotation as an average.



# TRI® SBA SURFACE

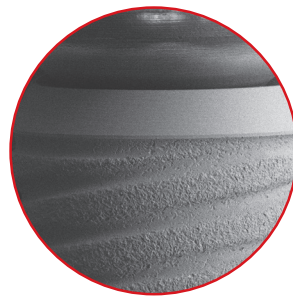
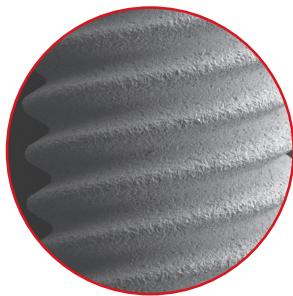
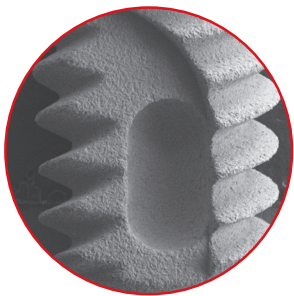
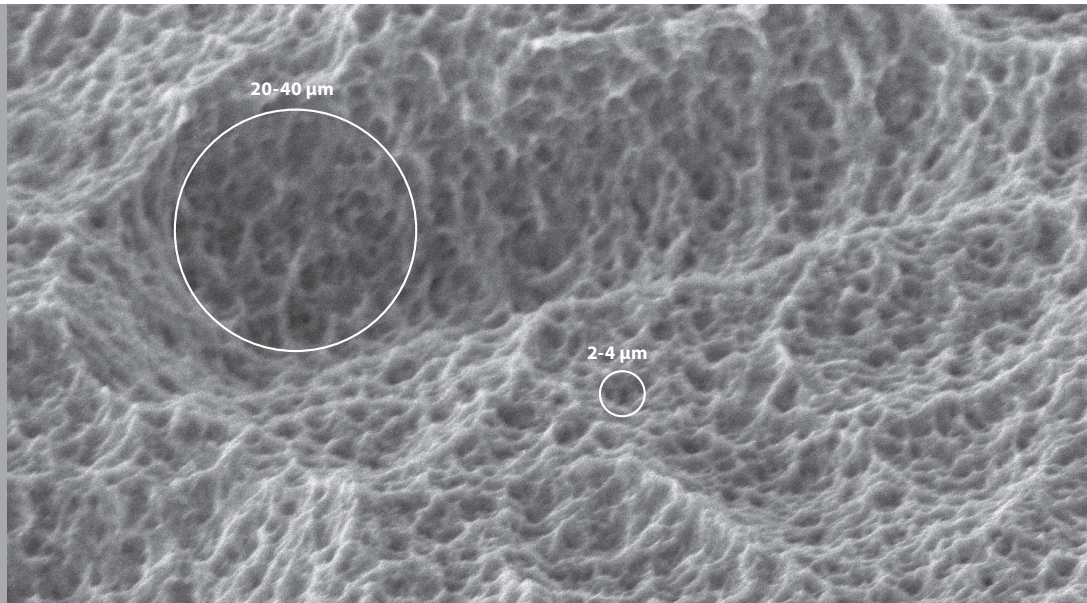
## FOR PREDICTABLE OSSEOINTEGRATION.

The TRI® SBA (sandblasted, large grit, acid-etched) surface is one of the industry gold standards for more than 20 years. It is created by blasting the implant surface under pressure with corundum particles. In the final step the surface is acid-etched twice in order to attain a medium roughness.



# SURFACE STRUCTURE

A **macrostructure of 20-40  $\mu\text{m}$**  and a **micro structure of 2-4  $\mu\text{m}$**  as an ideal basis for excellent osseointegration. This structure has been proven by numerous clinical studies for this surface type.



# TRI<sup>®</sup> POD

## A HANDLING REVOLUTION



**TO TOUCH IT  
IS TO LOVE IT.**

The new implant packaging by TRI<sup>®</sup> integrates the latest engineering know-how and innovation - Made in Switzerland. Its revolutionary touchless delivery concept allows to pick-up the implant directly with the surgical hand-piece in one single step. Whilst guaranteeing the highest purity of the TRI<sup>®</sup> SBA surface. A true design innovation which will take your surgical performance to a new level. **Touch it, and you will love it!**

### 3 Options for Implant Insertion



**Ratchet**



**Handpiece**



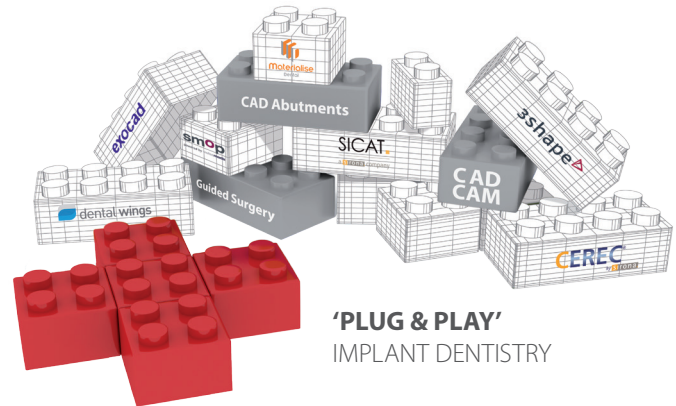
**By hand**

# TRI+

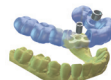
## INTERFACE TO THE DIGITAL WORLD.

TRI Dental Implants sets new standards with TRI+ as a universal implant interface to leading technology partners in digital dentistry. Linked with a lean dental implant system, TRI+ offers treatment options from simple to complex without limits:

- + 3D-Planning & Guided Surgery
- + Customized CAD abutments
- + CAD/CAM Cement-retained crowns and bridges
- + CAD/CAM Screw-retained bars and bridges



## DIGITAL TREATMENT OPTIONS



Pre-op planning  
Guided surgery



Customized  
CAD/CAM  
abutments




CAD/CAM  
screw retained  
bars and  
bridges



CAD/CAM  
cement  
retained bars  
and bridges



All-on-TRI®  
restorations

	✓				
 a  company	✓				
 powered by 	✓				
 by 		✓		✓	
		✓	✓	✓	✓
	✓	✓	✓	✓	✓
	✓	✓	✓	✓	✓

# TRI IMPLANT PORTFOLIO

## 1 KIT, 3 OPTIONS.

The TRI® Dental Implant System consists of 3 implant lines. All implant lines can be placed with one lean surgical kit. Simply perfect!



ONE SIZE  
FITS ALL

### TRI®-Narrow

Ideal with limited horizontal bone.



Ø 3.2 mm



3.3 mm

### TRI®-Vent

The bone level implant for all indications.



Ø 3.5 mm



3.75 mm

4.1 mm

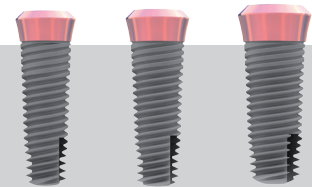
4.7 mm

### TRI®-Octa

The tissue level implant for esthetic results in the posterior region.



Ø 4.8 mm



3.75 mm

4.1 mm

4.7 mm

	Ø 3.3 mm	Ø 3.7 mm	Ø 4.1 mm	Ø 4.7 mm
L 6.5 mm			● ●	● ●
L 8 mm		● ●	● ●	● ●
L 10 mm	●	● ●	● ●	● ●
L 11.5 mm	●	● ●	● ●	● ●
L 13 mm	●	● ●	● ●	● ●
L 16 mm	●	●	●	●

# TESTIMONIALS

*„An implant design concept that respects the highest hard and soft tissue parameters, as well as strict requirements for primary and secondary stability. All based on practical experience linked with the latest implant research.“*

**Marius Steigmann, DDS**

(Institute Steigmann, Neckarsgmünd, Germany )

*„TRI Dental Implants combines science and clinical versatility with a very reasonable price. It has an excellent product line that not only makes it easy for hard tissue to integrate but also promotes soft tissue development with a simple prosthetic solution.“*

**Hom-Lay Wang, DDS, MSD, PhD**

(University of Michigan, USA)

## TRI ACADEMY

To learn more about our products visit our TRI® Academy Courses and Webinars: [academy@tri-implants.swiss](mailto:academy@tri-implants.swiss)

### Designed and Manufactured by TRI® in Switzerland



All implants are produced in specialized manufacturing units for dental implants. With more than 25 years of medical technology production know-how, we can guarantee consistent Swiss Precision with the highest quality.

Visit us in Switzerland: [visit@tri-implants.swiss](mailto:visit@tri-implants.swiss)



**TRI Dental Implants Int. AG**

Switzerland

Infoline: 00800 3313 3313

[www.tri-implants.swiss](http://www.tri-implants.swiss)

Become a TRI® Follower     

**TRI® Dental Implants**, the **TRI® Dental Implants** logotype and all other trademarks used in this document are, if nothing else is stated or is evident from the context in a certain case, trademarks of the **TRI Dental Implants Int. AG**.

2016-04



CE 1023 